



Pacific  
Community  
Communauté  
du Pacifique

RESCCUE

# Local Marine Resource Management & Monitoring in North Efate Vanuatu



FONDS FRANÇAIS POUR  
L'ENVIRONNEMENT MONDIAL



# Project Background

- Coordinated by the secretariat of Pacific Communities (SPC) and funded by the French Development agency titled the RESCCUE project - Restoration of Ecosystem Services and Adaptation to Climate Change
- Concurrent projects with similar aims being carried out in French Polynesia, Fiji and New Caledonia
- Overall goal is to contribute to increasing the resilience of Pacific Island Countries and Territories (PICTs) in the context of global changes



50 0 50 100 150 200 250 km



ANEITYUM

© Eryn Hooper



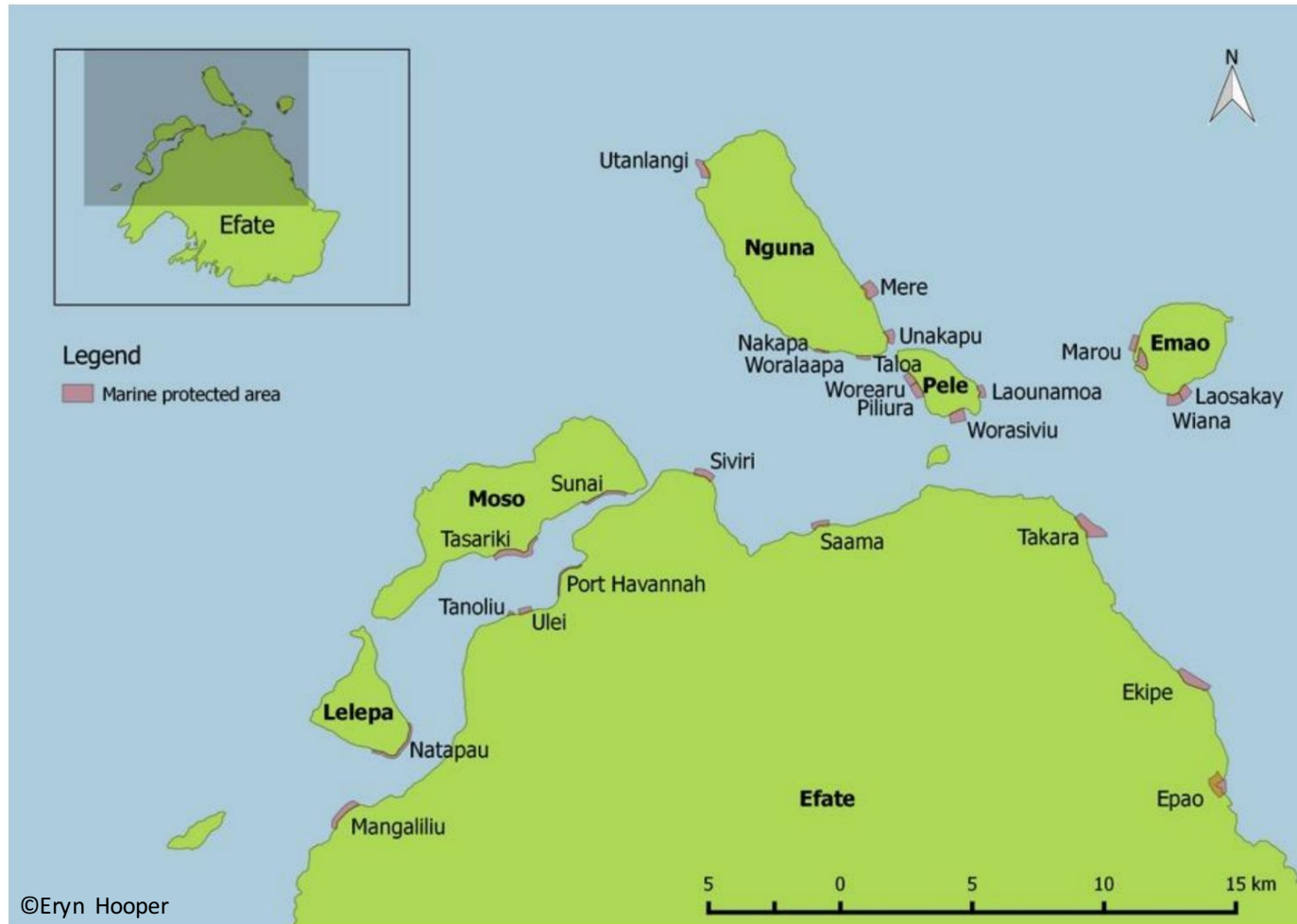


Figure 2. Map of North Efate showing marine protected areas and the 27 villages visited in 2016. Inset: study area relative to Efate.



# Project Background

- Vanuatu is a chain of low lying islands in the Pacific
- Highly vulnerable to the effects of climate change
- Under a lot of pressure for their marine resources; Trochus, shells, Sea cucumber, Green Snail
- Initial assessments identified resource management as a key challenge for locals



# Projects Aims

## **Build the capacity of local people**

- Develop a method to allow locals to make informed decisions about their resources
- Each village can decide from a “toolkit” what they want to monitor based on what is important to them



# The Toolkit

5 modules

- Fish catch survey.
- Reef Health
- Invertebrates
- Sea grass (still under development)
- Mangroves (still under development)



# Lukluk measuring

- Instead of counting invertebrates, corals, algae etc. monitors estimate based on **local knowledge**
- Using a 4-point scale from low/none (nogat) to very high (fulap), monitors record invertebrate numbers, reef health or impacts
- Circle the line on the scale that best represents the number observed







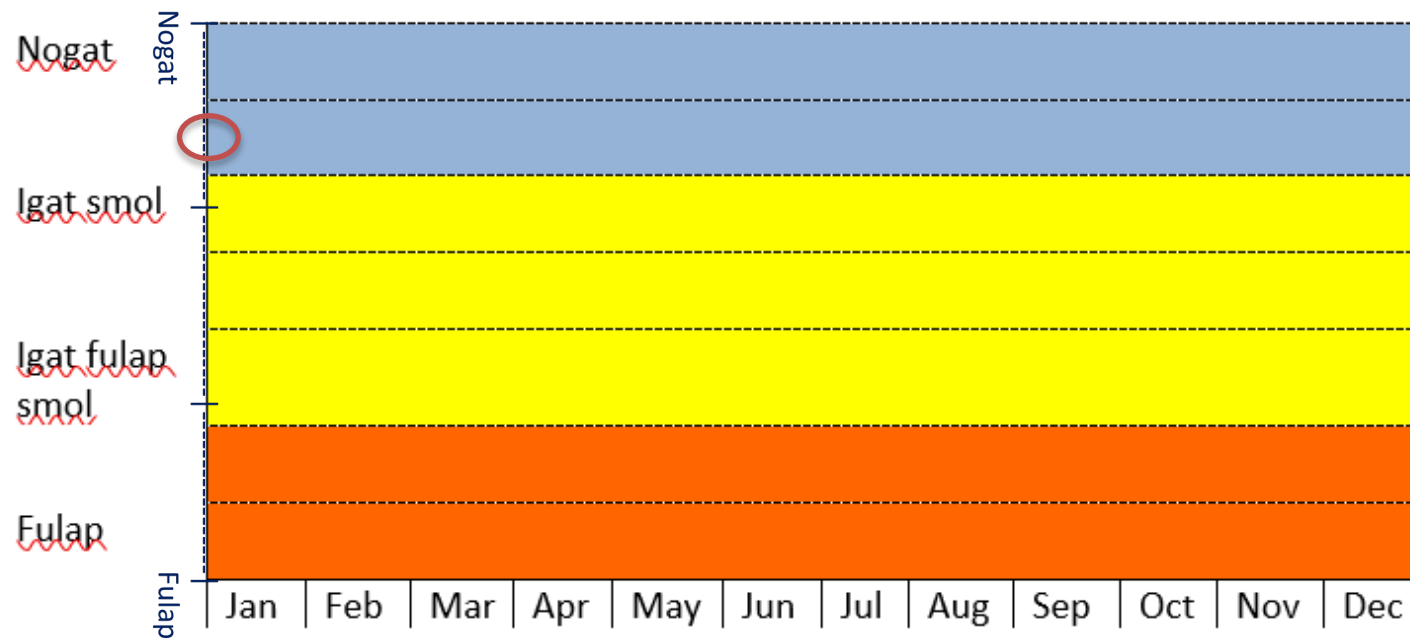
So you monitor and you collect  
data....

A Key Question for this project

**How can communities turn this  
knowledge into useful actions?**



## Example: Algae cover

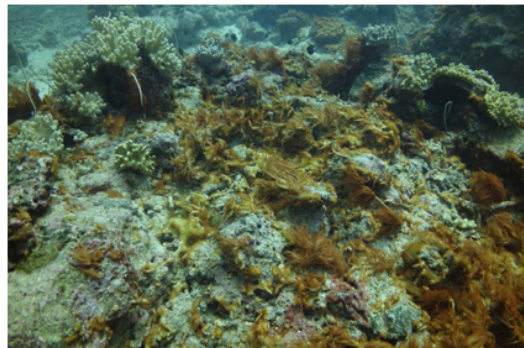
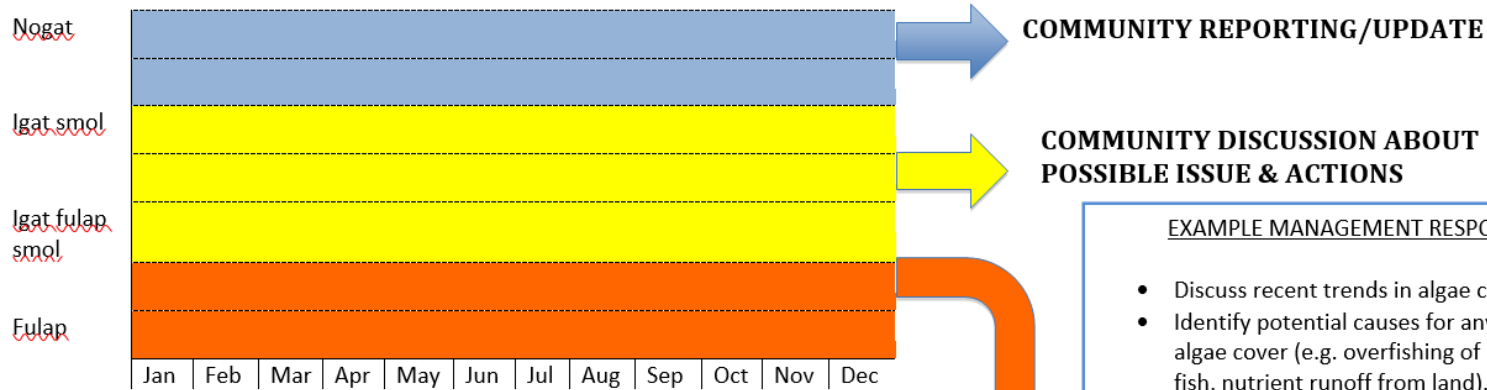




**Reef Impacts: Algae cover**

Date:

Monitors:



**COMMUNITY SELECTION OF MANAGEMENT ACTIONS**

- EXAMPLE MANAGEMENT ACTIONS:
- Identify cause of algae increase (e.g. overfishing of herbivores, nutrient runoff from land).
  - Instigate appropriate management action from management plan if available).
  - Total ban on fishing for herbivore fish.
  - Identify and eliminate/reduce nutrient runoff.
  - Contact network coordinators for assessment and advise.

The role of Marine Champions



# Tankyu Tumas



RESCCUE

C<sub>2</sub>O  
coasts | climate | oceans